

## **Oxford Meadows and Farmoor CTA (Conservation Target Area)**

This area includes the Thames Valley to the west of Oxford as far as Farmoor. It includes the Oxford Meadows Special Area of Conservation, Farmoor Reservoir and gravel workings between Yarnton and Cassington.

**Joint Character Area:** Thames and Avon Vales

**Landscape Type:** Riverside Meadows

**Geology:** Alluvium

**Topography:** Flat riverside land

**Area of CTA:** 1653 hectares

### **Biodiversity:**

- **Lowland Meadows:** Extensive areas of nationally important lowland meadow habitat are found at Pixey and Yarnton Meads, Port Meadow, Wolvercote Meadows and Cassington Meadows. There are also a number of smaller meadow sites at Wolvercote, Yarnton and near Eynsham.
- **Floodplain Grazing Marsh:** Extensive areas of this area are floodplain grazing marsh including Port Meadow and some of the large lowland meadow sites as well as other areas of wet improved grassland.
- **Eutrophic Standing Water:** Farmoor Reservoir is the largest area of standing water in Oxfordshire. Some of the new gravel pits near Yarnton also attract good number of wildfowl. Wolvercote gravel pit is also in this area. This habitat is also found at Pinkhill at Farmoor, Dukes Lock Pond and old gravel workings near Cassington.
- **Fen/swamp:** Swamp habitat is found in a canalside meadow at Wolvercote, which supports good numbers of overwintering snipe, and in small railside pits at Yarnton. Rich areas are found in ditches at Wytham.
- **Reedbeds** There is a reedbed at Dukes Lock Pond, at Trap Grounds, in an old gravel pit at Cassington and small areas elsewhere. Reedbeds have been created next to the Thames at Farmoor Reservoir.
- **Wet Woodland:** Small areas largely associated with old pits

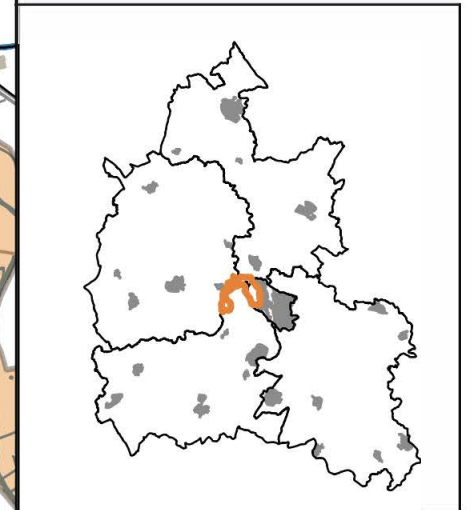
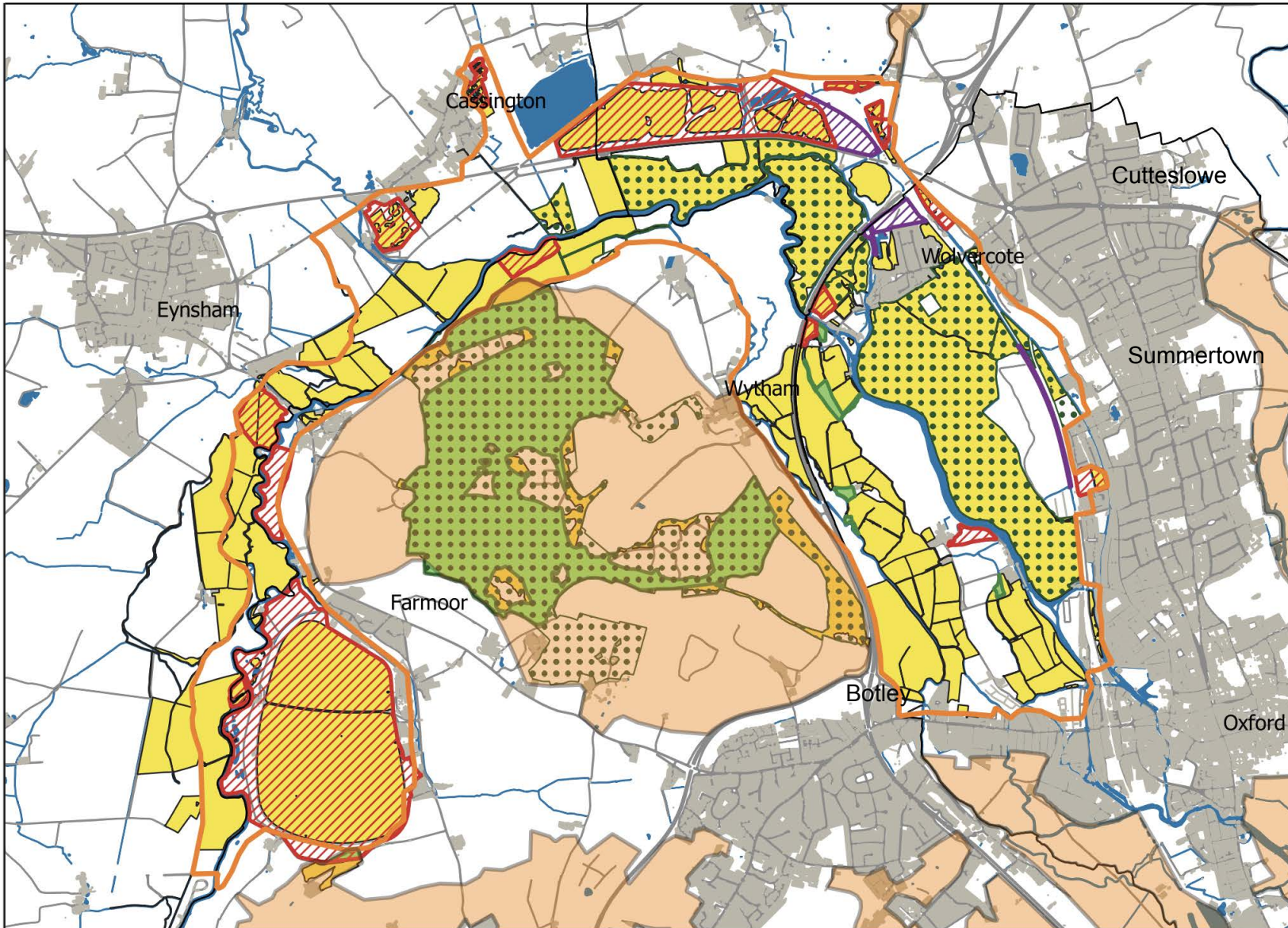
**Access:** Largely restricted to footpaths and bridleways including the Thames Path. There is controlled access at Farmoor.

### **Archaeology:**

#### **Oxfordshire Biodiversity Action Plan Targets associated with this CTA:**

1. Lowland meadow – maintenance, restoration and creation.
2. Floodplain grazing marsh – maintenance, restoration and creation (outside the lowland meadow sites, for wading birds).
3. Reedbed – maintenance and creation.
4. Fen (and swamp) – maintenance.
5. Ponds – creation (of pond complexes in particular)
6. Arable field margins – maintenance, restoration and creation (for wild flowers in particular)
7. Hedgerows – maintenance
8. Rivers – maintenance (including resource protection)

# Oxford Meadows and Farmoor Conservation Target Area



- CTA Boundary
- Local Wildlife Sites
- Proposed Local Wildlife Sites
- SSSIs
- Ancient Woodland
- Priority Habitats
- Water
- Other CTAs

Map produced by Thames Valley Environmental Records Centre in 2019  
© Crown Copyright, All rights reserved Oxfordshire County Council Licence No 100023343 (2019)  
FOR REFERENCE PURPOSES ONLY, NO FURTHER COPIES MAY BE MADE

**Amount of BAP habitat present in CTA (from TVERC BAP Habitat GIS layer 5/2010) and 2015 Habitat Targets for this CTA**

<b>Oxford Meadows and Farmoor CTA</b>	<b>Lowland Calcareous Grassland</b>	<b>Lowland Dry Acid Grassland</b>	<b>Lowland Meadows</b>	<b>Coastal and Floodplain Grazing Marsh</b>	<b>Eutrophic Standing Waters</b>	<b>Lowland Fens</b>	<b>Reedbeds</b>	<b>Lowland Beech and Yew Woodland</b>	<b>Lowland Mixed Deciduous Woodland</b>	<b>Wet Woodland</b>	<b>Wood - Pasture and Parkland</b>	<b>Traditional Orchards</b>
Area of BAP Habitat in CTA (ha)			282.2	680.2	190.1	0.8	2.9		15.7	10.6	0.6	1.4
% of CTA area			17.1	41.2	11.5	0.0	0.2		1.0	0.6	0.0	0.1
% of county resource			26.1	13.8	20.4	0.7	11.2		0.3	7.6	0.0	0.4
<b>2015 BAP targets</b>	<b>Lowland Calcareous Grassland</b>	<b>Lowland Dry Acid Grassland</b>	<b>Lowland Meadows</b>	<b>Coastal and Floodplain Grazing Marsh</b>	<b>Eutrophic Standing Waters – No targets for 2015</b>	<b>Lowland Fens</b>	<b>Reedbeds</b>	<b>Native Woodland</b>			<b>Wood - Pasture and Parkland</b>	<b>Traditional Orchards - No targets for 2015</b>
Maintenance (to be determined)	-	-	-	-	-	-	-	-			-	-
Achieving Condition (to be determined)	-	-	-	-	-	-	-	-			-	-
Restoration			61		-		-					-
Creation			5	6	-	-	25					-