

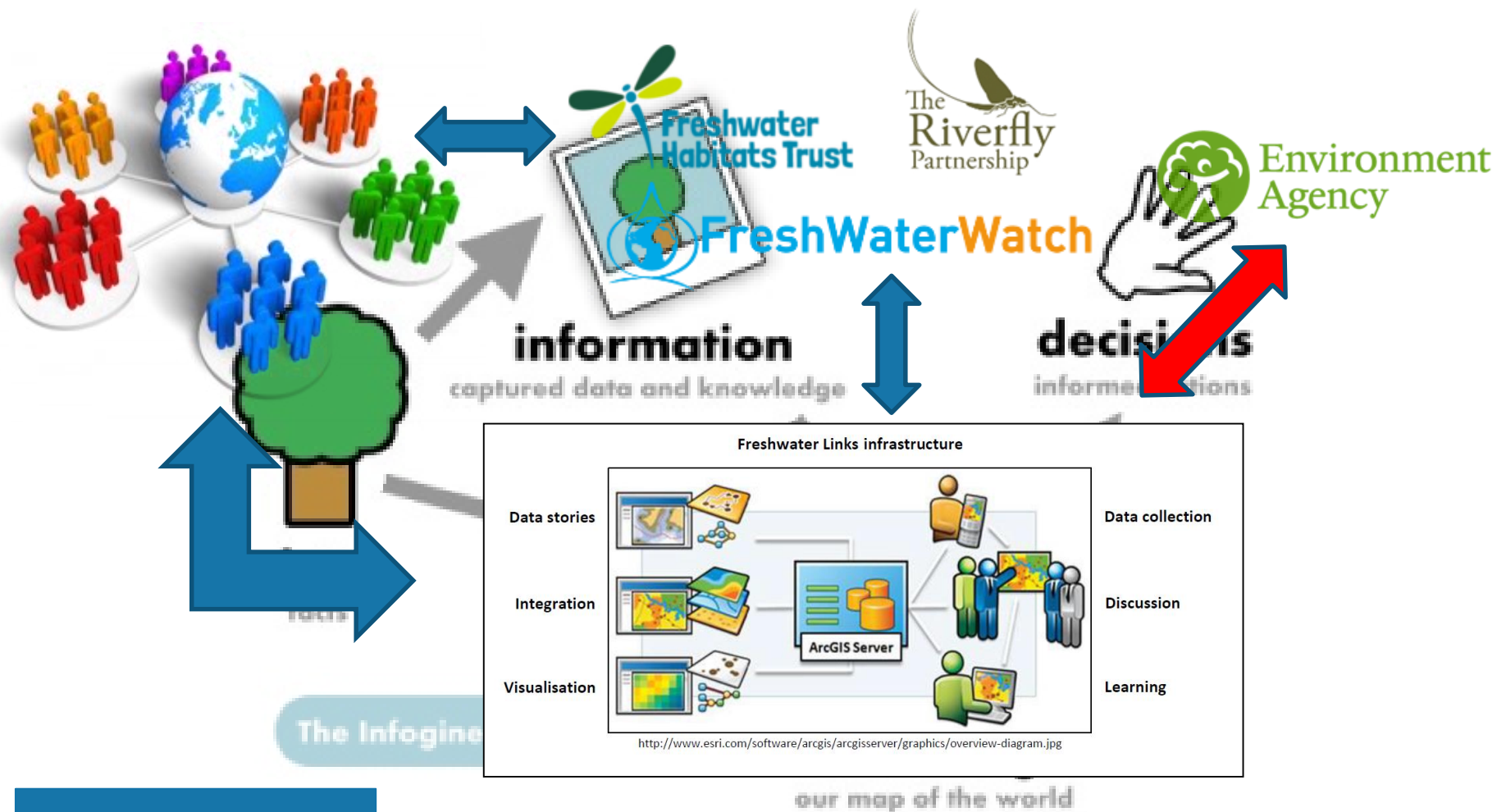
Freshwater Links

**ECP Annual Stakeholder Meeting
30th November 2017**

Luis FP Velasquez – lfvelasquez@earthwatch.org.uk

THE OPPORTUNITIES: IMPACT THROUGH DATA VISUALISATION AND COMBINING MULTIPLE SOURCES

TOWARDS ACTIONABLE KNOWLEDGE: FRESHWATER LINKS



MOTIVATION AND AIM

- **Motivation**: the absence and/or level of complexity in accessing relevant and applicable environmental data can restrict policy and decision making processes .
- **Aim**: enhance geospatial resource sharing between NGOs, academic institutions and government organisations.

EMPOWERING COMMUNITIES BY:

- Fostering partnerships and data sharing between different stakeholders
- Encouraging and supporting open data, as well as developing the tools and applications needed to achieve this successfully
- Improving local understanding of freshwater/ water management issues through a suite of learning resources

THE ROAD TO GET THERE

- **Participants** - sharing participants to enable them to progress from one project to another - mobilise the community more effectively
- **Impact** - a bigger presence achieved through collaboration and dissemination
- **Shared data** - data not in silos and easily combined to generate greater insights
- **Expertise** - technical, scientific and engagement skills pooled and shared
- **Scale** - increased likelihood for projects to expand and grow as a result of the above

FRESHWATER LINKS



CONNECTING COMMUNITIES WITH THEIR FRESHWATER ENVIRONMENTS

[VIEW OUR MAPS](#)

OUR LATEST MAPS

The Freshwater Links philosophy is that 'The whole is greater than the sum of its parts'. Freshwater Links aims to empower local communities and researchers by connecting the growing number of volunteer, regulatory and research datasets in the Thames Catchment together. Discover datasets or understand your local aquatic environments, and find out how volunteers, NGOs and government organisations can work together and encourage ideas that will help to improve the quality of their local aquatic environments.

[FIND OUT HOW TO GET THE MOST FROM OUR MAPS](#)

[MAP USAGE](#)

WATER STORIES

Discover freshwater projects across the river Thames catchment where you can get involved. Each of these projects is developing productive partnerships between scientists and volunteers to help improve the state of natural environments and carry out important research.

<h4>FRESHWATER WATCH</h4> <p>READ STORY</p>	<h4>ENVIRONMENT AGENCY</h4> <p>READ STORY</p>	<h4>FRESHWATER HABITAT TRUST</h4> <p>READ STORY</p>	<h4>WATER FOR WILDLIFE</h4> <p>READ STORY</p>
<h4>CITIZEN CRANE</h4> <p>READ STORY</p>	<h4>EVENLODE CATCHMENT LABORATORY</h4> <p>READ STORY</p>	<h4>RIVERFLY MONITORING INITIATIVE (COMING SOON)</h4>	<h4>UPPER THAMES FRESH WATER PROJECT (COMING SOON)</h4>