



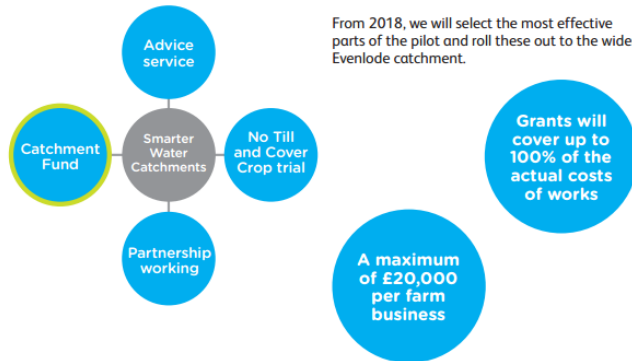
Smarter Water Catchments

Evenlode Catchment Fund



We have set up **Smarter Water Catchments** in the **Evenlode** to encourage water sensitive farming. The Evenlode is a headwater of the River Thames flowing from Moreton-in-Marsh to Eynsham over a distance of more than 75km. It drains an area of nearly 30,000 ha and is managed as a number of river 'waterbodies'.

Smarter Water Catchments in the Evenlode has four components (diagram below). One of these is the **Catchment Fund**. This provides grants for infrastructure and farm management specifically designed to reduce the amount of phosphorus lost from fields and farmyards to watercourses. The types of activities and payments provided are set out in this leaflet. Throughout 2017 and 2018 we will be piloting the roll out of the Catchment Fund within the Longborough Stream, Bledington Brook and Westcote Brook waterbodies (see map).



In addition to the Catchment Fund, we are offering an **advice service**, to help you make the best of existing agri-environment schemes. This service includes free farm visits to help design farm activities that reduce phosphorus loss and deliver other benefits on your land. We will also be working with the **Evenlode Catchment Partnership** and other local organisations to deliver river and wetland restoration schemes across the catchment. Finally, we are looking for farmers to work with in a trial to explore the effectiveness of **No Till and Cover Crops** to reduce the loss of phosphorus to watercourses.

From 2018, we will select the most effective parts of the pilot and roll these out to the wider Evenlode catchment.

We will be accepting applications to the Catchment Fund from the 22 September to 3 November 2017. Implementation will start on 1 January 2018.

- Is your farm holding located within one of the three pilot catchments in the Evenlode?
- Would any of the measures listed overleaf suit your farm business?
- Would you like more information? Please contact your Agricultural Advisor.

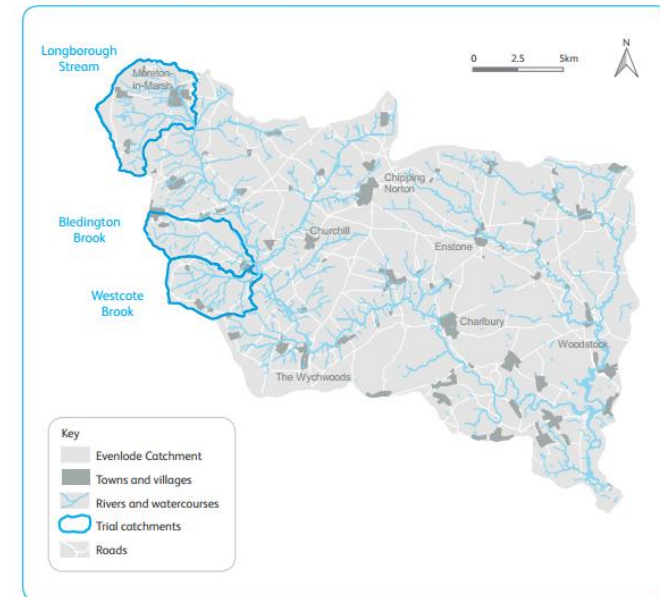


Did you know that by adopting some of these measures you will also be helping to deliver **Natural Flood Management**? We are working with the Evenlode Catchment Partnership and their project officer Richard Bennett on an exciting project to identify new locations for ponds, bunds, woody dams and new areas of woodland to help store and slow the flow of water during floods.



Richard has been working in environmental engineering for 16 years. Most recently he has led the design and construction of natural flood management schemes throughout the Evenlode. If you are particularly interested in this work, let Sarah know and she can put you in touch.

Evenlode pilot catchments



<https://www.thameswater.co.uk/evenlodecatchment>



Responses by WFD Waterbody 17/11/2017



- Responses by WFD Waterbody
1. Evenlode Source
 2. Upper Evenlode
 3. Little Compton
 4. Bledington Brook
 5. Westcote Brook
 6. Cornwell Brook
 7. Littlestock Brook
 8. (Middle Evenlode)

Legend

- TW Capital grant
- Middle tier (Advice only)
- No till trial

